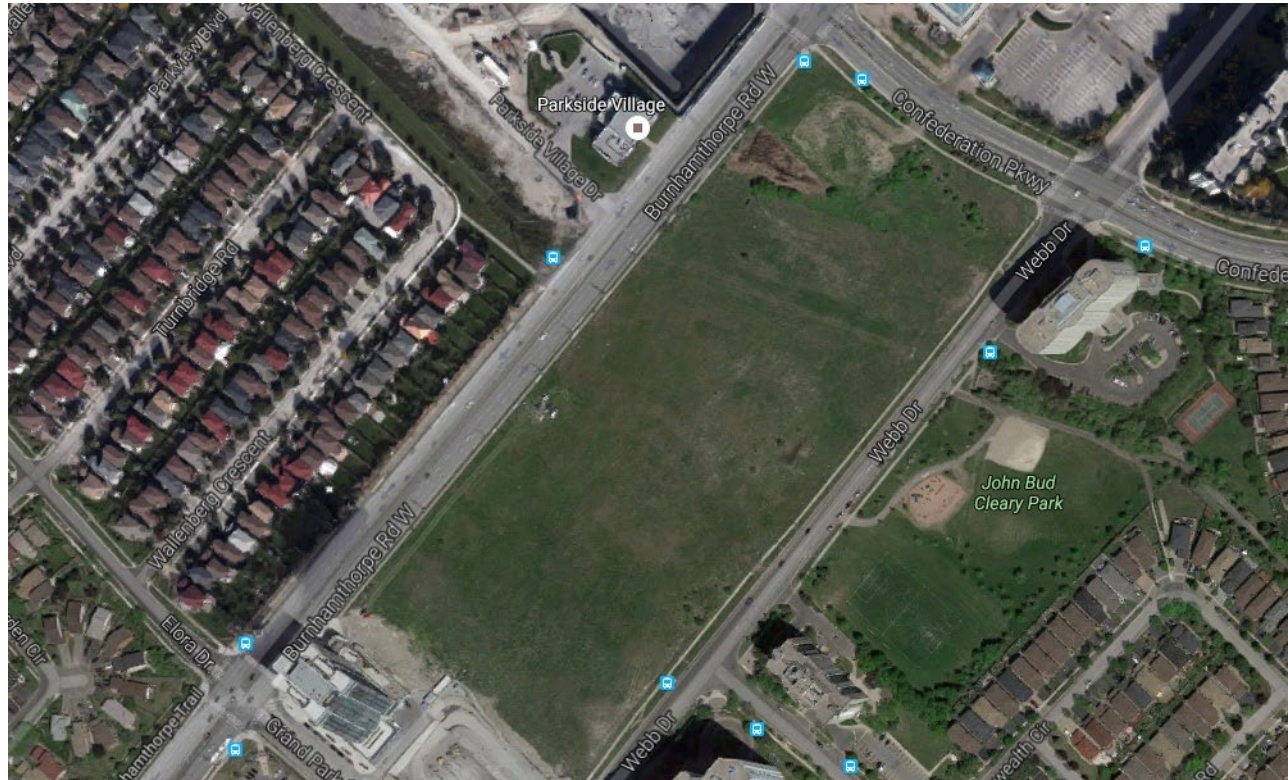


Sep 26, 2016

Ten-tower condo development in downtown Mississauga to be unveiled Tuesday

Mississauga News

By Rachael Williams 



Rogers Land

Rogers Real Estate Development is proposing to construct 10 high-rise towers at Burnamthorpe Rd. W. and Confederation Parkway.

Mississauga's skyline will transform yet again with the addition of new high-rise condo towers in the downtown core.

Rogers Real Estate Development Limited will be unveiling its plans for a 10-tower development on 15 acres of land, located at the southwest corner of Burnamthorpe Road West and Confederation Parkway.

Urban Capital Property Group is assisting Rogers Real Estate with the development process.

Mark Reeve, partner at Urban Capital Property Group, said he anticipates the towers will range in height from 15 to 60 storeys and will feature a mix of residential and commercial uses.

However, building heights, he says, will be based on the marketplace and how many units are sold as the process gets underway.

The first phase of the development will be a 51-storey tower located on the northeast corner of the site, closest to downtown, says Reeve.

An official site plan has not been submitted to the city, but the process is ongoing. Reeve said construction could begin by early 2018.

The official unveiling will be on Tuesday, Sept. 27 at the site location, southwest corner of Burnamthorpe Road West and Confederation Parkway.